

TRIPLTEK
bracket for
BALDUR

by Thor's Drone World

User's Manual

TRIPLETEK
mounting bracket
for
LIFTHOR
BALDUR





Content:

- Mounting bracket
- TRIPLTEK bracket
- 2x Hex Keys
- 4x Thumb Screws
- Tripod Knob

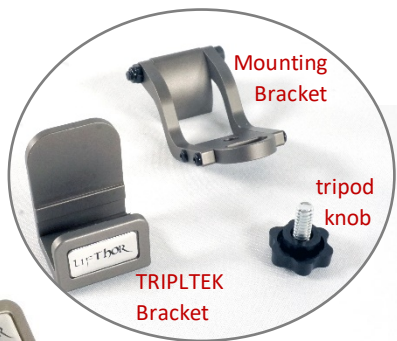


How to assemble:

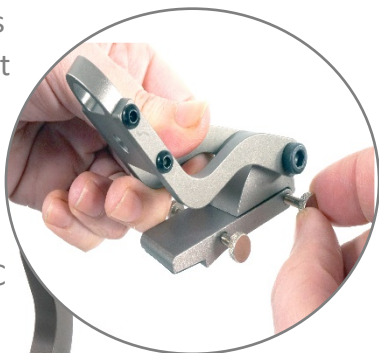
Unscrew the ball joint plate from your LifThor Baldur tablet holder



Remove the TRIPLTEK bracket by unscrewing the tripod knob from the mounting bracket.



Remove the thumb screws from the mounting bracket to install it on the LifThor Baldur. Insert first the two rear screws loosely to hinge the plate in place before aligning it to the RC



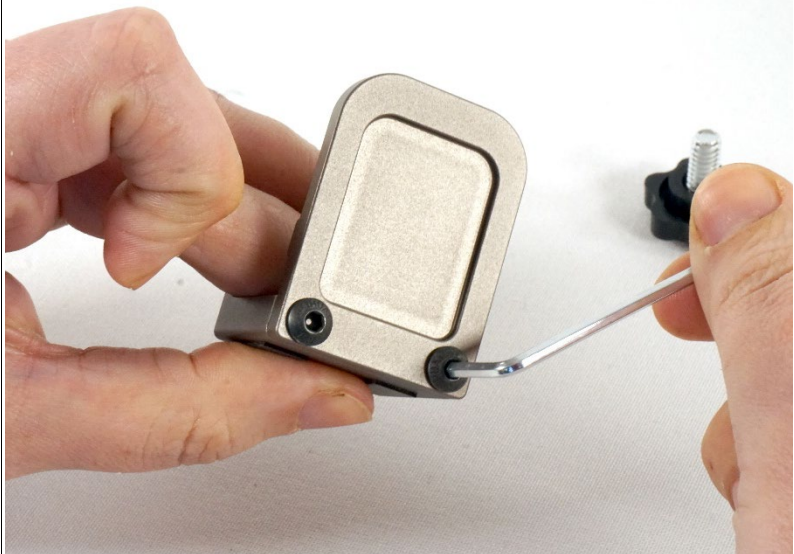
Once everything is in place, pressure the plate against the RC to secure it in place and proceed to screw the remaining two screws. There is no need to force the screw tight



Finish screwing the two rear screws to properly secure the mounting bracket



Unscrew the TRIPLTEK mount from the back with the small Hex Key Provided.



Center the front bracket on the
TRIPLTEK tablet and align the back
part with the front bracket

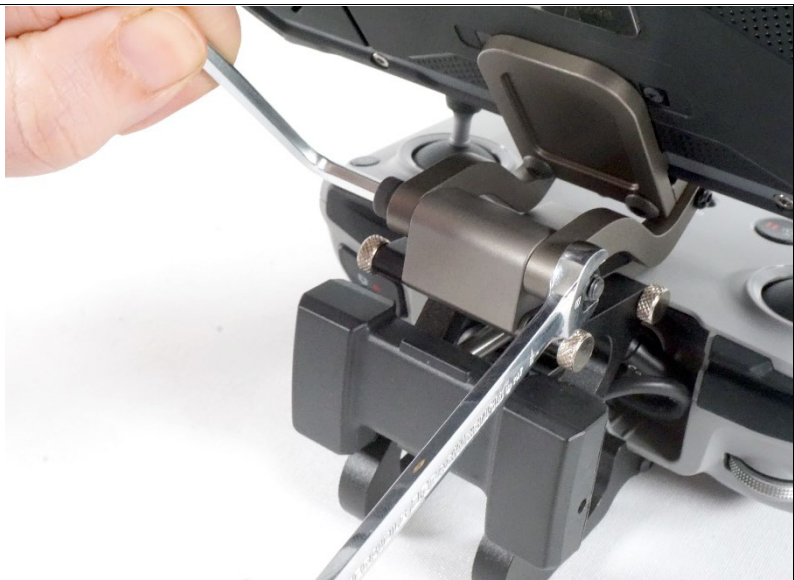




Secure the bracket in place by attaching the rear piece. We recommend placing both screws before securing it tightly, to help it keeping it aligned. Once secured your TRIPLTEK tablet is ready to be mounted.



Mount your TRIPLETEK Tablet to your remote control by securing it with the tripod knob provided. Make sure to properly adjust the preferred position.



Once you have adjusted the preferred position/height you can tighten the extension arms on the back with the help of an 8mm wrench key to secure it in place.



All set!
Enjoy your flight!

www.lifthor.com

